

**AFFIDAVIT**

STATE OF FLORIDA  
COUNTY OF MARTIN

BEFORE ME, THE UNDERSIGNED AUTHORITY, DULY AUTHORIZED IN THE STATE AND COUNTY AFORESAID TO ADMINISTER OATHS AND TAKE ACKNOWLEDGEMENTS, PERSONALLY APPEARED C.E. RAULERSON, AS ROAD SUPERINTENDENT, WHO, AFTER BEING DULY SWORN, DEPOSES AND SAYS ON OATH AS FOLLOWS:

1. I, THE UNDERSIGNED, BEING COUNTY ROAD SUPERINTENDENT OF MARTIN COUNTY, FLORIDA, AND AS SUCH A DULY QUALIFIED EMPLOYEE OF SAID MARTIN COUNTY, DO AVER THAT I AM THOROUGHLY FAMILIAR WITH ALL OF THE ROADS IN MARTIN COUNTY, FLORIDA AND WITH THE PROGRAM OF MAINTENANCE AND IMPROVEMENT THEREOF. THAT I HAVE BEEN ASSOCIATED IN PRESENT OR SIMILAR CAPACITY ON ROAD PROGRAMS IN SAID COUNTY FOR A PERIOD IN EXCESS OF 19 YEARS.

2. THAT TO MY PERSONAL KNOWLEDGE AND OBSERVATION THE ROAD KNOWN AND DESCRIBED AS N.E. PALMETTO DRIVE, LYING NORTH OF COUNTY ROAD C-707 A (COMMERCIAL ST.) ALL WITHIN MARTIN COUNTY AS LOCATED AS SHOWN ON THE MAP BELOW WAS CONSTRUCTED BY AND HAS BEEN MAINTAINED AND REPAIRED CONTINUOUSLY AND UNINTERRUPTED FOR 18 YEARS BY THE MARTIN COUNTY ROAD AND BRIDGE DEPARTMENT. FURTHER THAT THE MAINTENANCE OF SAID PORTION OF N.E. PALMETTO DRIVE CONSISTS OF RESURFACING AND PATCHING OF EXISTING PAVEMENT.

FURTHER AFFIANT SAYETH NOT.

THIS 6 DAY OF Feb, 1979.

*C.E. Raulerson*  
ROAD SUPERINTENDENT

**MAINTENANCE MAP, N.E. Palmetto Drive**

**ACKNOWLEDGEMENT**

SWORN TO AND SUBSCRIBED BEFORE ME THIS 6th DAY OF FEBRUARY, 1979 BY C.E. RAULERSON AS SUPERINTENDENT, AT STUART, MARTIN COUNTY, FLORIDA. WITNESS MY HAND AND OFFICIAL SEAL IN THE COUNTY AND STATE LAST AFORESAID THIS 6th DAY OF FEBRUARY, 1979.

*Credya J. Baetz*  
NOTARY PUBLIC, STATE OF FLORIDA AT LARGE  
MY COMMISSION EXPIRES: Aug 5, 1980

**DEDICATION**

PURSUANT TO SECTION 95.361 (1), FLORIDA STATUTES, (1977) THE PORTIONS OF N.E. PALMETTO DRIVE BETWEEN STATION 10+00.00, NORTH RIGHT-OF-WAY LINE OF COUNTY ROAD C-707 A (N.E. COMMERCIAL ST.) AND STATION 17+49.21, SOUTH RIGHT-OF-WAY LINE OF N.E. CHURCH STREET AND BETWEEN THE MAINTENANCE RIGHT-OF-WAY LINES, ALL WITHIN MARTIN COUNTY AND LOCATED AS SHOWN ON THE MAP BELOW, SHALL HEREAFTER BE DEEMED DEDICATED TO THE PUBLIC AND ALL RIGHT, TITLE, EASEMENTS AND APPURTENANCES ARE HEREBY VESTED IN MARTIN COUNTY, FLORIDA.

CERTIFIED BY:

BOARD OF COUNTY COMMISSIONERS

*Louise V. Isaacs*  
LOUISE V. ISAACS, CLERK  
By *Charlotte Burkey, o.c.*

BY: *Frank A. Wachra*  
FRANK A. WACHRA, CHAIRMAN

**ACCEPTANCE**

ACCEPTED FOR FILES AND RECORDED IN THE PUBLIC RECORDS OF MARTIN COUNTY, FLORIDA. THIS 13th DAY OF February A.D. 1979 IN PLAT BOOK 2 PAGE 23.

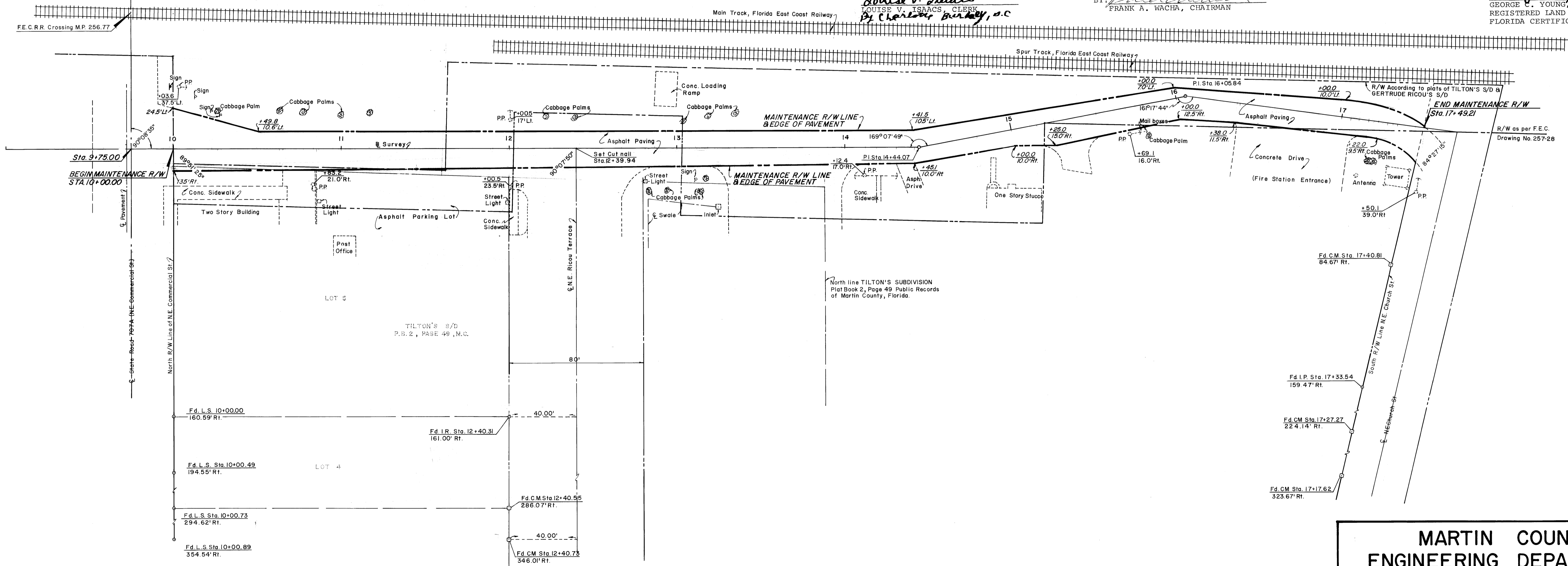
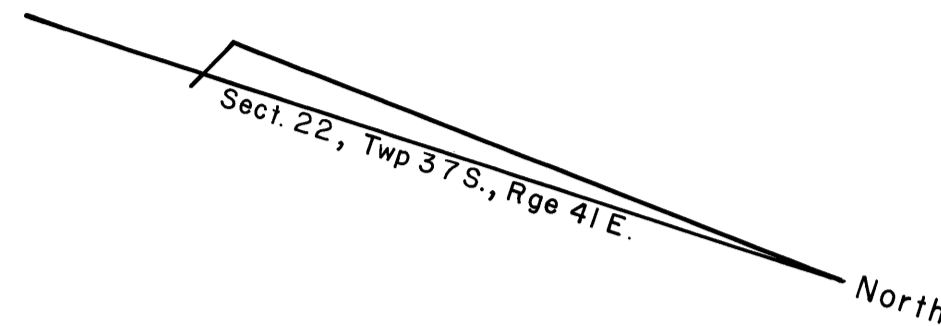
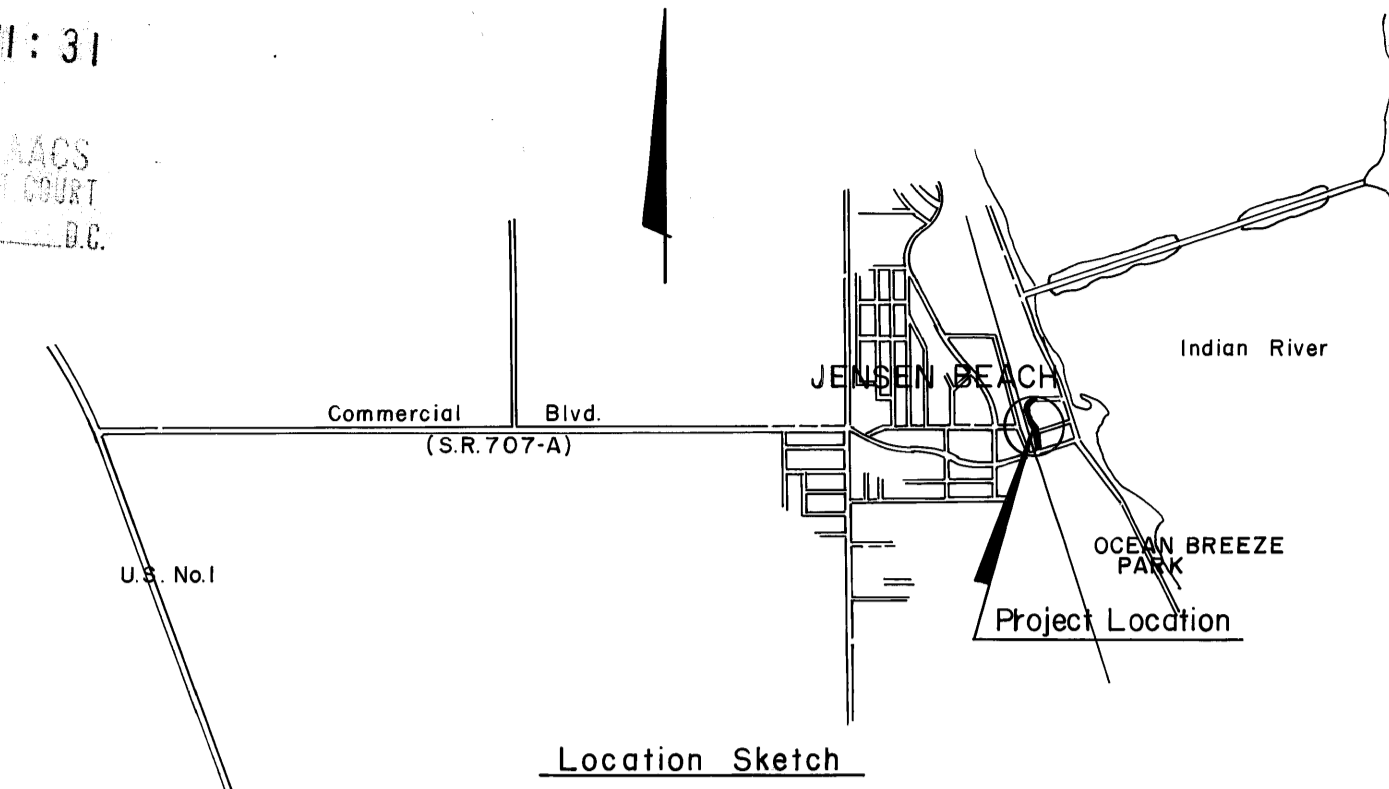
File No. 331536

*Louise V. Isaacs*  
CLERK OF CIRCUIT COURT OF MARTIN COUNTY, FLORIDA  
By *Charlotte Burkey, o.c.*  
**SURVEYOR'S CERTIFICATION**

I HEREBY CERTIFY THAT THE SURVEY INFORMATION SHOWN HEREON IS A CORRECT REPRESENTATION OF A SURVEY MADE UNDER MY DIRECTION AND THAT IT IS CORRECT TO THE BEST OF MY KNOWLEDGE AND BELIEF.

*George C. Young, Jr.*  
GEORGE C. YOUNG, JR.  
REGISTERED LAND SURVEYOR  
FLORIDA CERTIFICATE NO. 3036

FREEDOM RECORD  
MARTIN COUNTY, FLA.  
79 FEB 13 AM 1:31  
LOUISE V. ISAACS  
CLERK OF CIRCUIT COURT  
BY \_\_\_\_\_ D.C.



<b>MARTIN COUNTY ENGINEERING DEPARTMENT</b>	
<b>MAINTENANCE MAP</b>	
<b>N.E. Palmetto Drive</b>	
SCALE 1" = 30'	DATE <i>Feb 16, 1979</i>
DESIGNED BY	FILE & DRAWING NO. <i>78-3-1127</i>
DRAWN BY <i>R.W.E.</i>	SHEET
CHECKED BY	1 OF 1
NOTE BOOK NO.	
<b>HUTCHEON ENGINEERS INCORPORATED</b>	
<b>CIVIL ENGINEERS &amp; SURVEYORS</b>	
WEST PALM BEACH	BELLE GLADE

NO.	REVISIONS	DATE	BY	SEAL